



**ALASKA DIVISION OF HOMELAND SECURITY &  
EMERGENCY MANAGEMENT**



**SITUATION REPORT 20-315 • Nov 10, 2020**

Toll-Free 1.800.478.2337

Anchorage Area 907.428.7000

SEOC 907.428.7100

<p><b><u>SEOC Preparedness Level</u></b> Level 2 Heightened Awareness – For COVID-19 Response</p>	<p><a href="http://ready.alaska.gov">http://ready.alaska.gov</a></p>	<p><b><u>National Terrorism Advisory System:</u></b> View this site for the latest NTAS bulletin: <a href="#">read the current NTAS Bulletin here.</a></p>
<p><b><u>Maritime Security (MARSEC)</u></b> Level:1-Minimum Appropriate Security Measures</p>	<p><b>WHO Novel Coronavirus Pandemic (COVID-19):</b> <a href="#">2019 Novel Coronavirus</a></p>	<p><b><u>Alaska Military Installation Force Protection Level:</u></b> FPCON Bravo</p>

(Significant changes from previous situation reports are in red.)

**THREAT LEVEL CHANGES:** None.

**Significant Issues**

**Operations:**

**Prince of Wales Island Landslides and Flooding**

On November 5, 2020, the Craig City Council passed Resolution 20-18, declaring a disaster for recent flooding and landslide events on Prince of Wales Island between October 25 and November 2, 2020. The city anticipates the costs of the response, recovery, and reconstruction of damaged facilities within the area of the City of Craig disaster declaration will be significant. This does not include damage to state road systems; USFS roads and facilities; damage to other community roads not in Craig's jurisdiction; and private property (both business and residential).

**Shishmaref Sea Storm Damage**

On November 9, 2020, the City, Native Village, and Corporation of Shishmaref, approved Resolution 21-03 declaring a disaster after recent high winds, strong surf, and storm surge from last weekend's storm damaged the Shishmaref Sanitation Road prohibiting vehicle access to the landfill and sewage lagoon. The City intends to construct a temporary access road along the south side of the airport property to the landfill. There are no reports of damage to homes, community facilities, or critical infrastructure – although a complete assessment has not yet been made.

**Coronavirus (COVID-19) Pandemic:**

A unified command has been established at the SEOC. The SEOC continues to support statewide response to COVID-19.

## **State of Alaska Department of Health and Social Services (DHSS)**

DHSS is operating as the Medical Branch under the State EOC/Unified Command.

For more information about the outbreak refer to:

<https://covid19.alaska.gov/>

<https://www.cdc.gov/coronavirus/2019-ncov/index.html>

The Alaska DHSS website is located at <http://dhss.alaska.gov/Pages/default.aspx>

### **NTAS BULLETIN:**

To read current advisories, select the link below.

<https://www.dhs.gov/national-terrorism-advisory-system>

### **Travel Alerts and Conditions**

COVID-19 Health Mandates may affect travel. Check <https://covid19.alaska.gov/> for current Health Mandates.

For current driving conditions dial 511 or link to <http://511.alaska.gov/>

### **Recent Earthquakes**

USGS Earthquake Information: <http://earthquake.usgs.gov/>

National Tsunami Warning Center: <http://ntwc.arh.noaa.gov/>

### **Alaska Volcanoes**

**Korovin** Alert Level: Advisory and Aviation Color Code: Yellow

**Semisopchnoi** Alert Level: Advisory and Aviation Color Code: Yellow

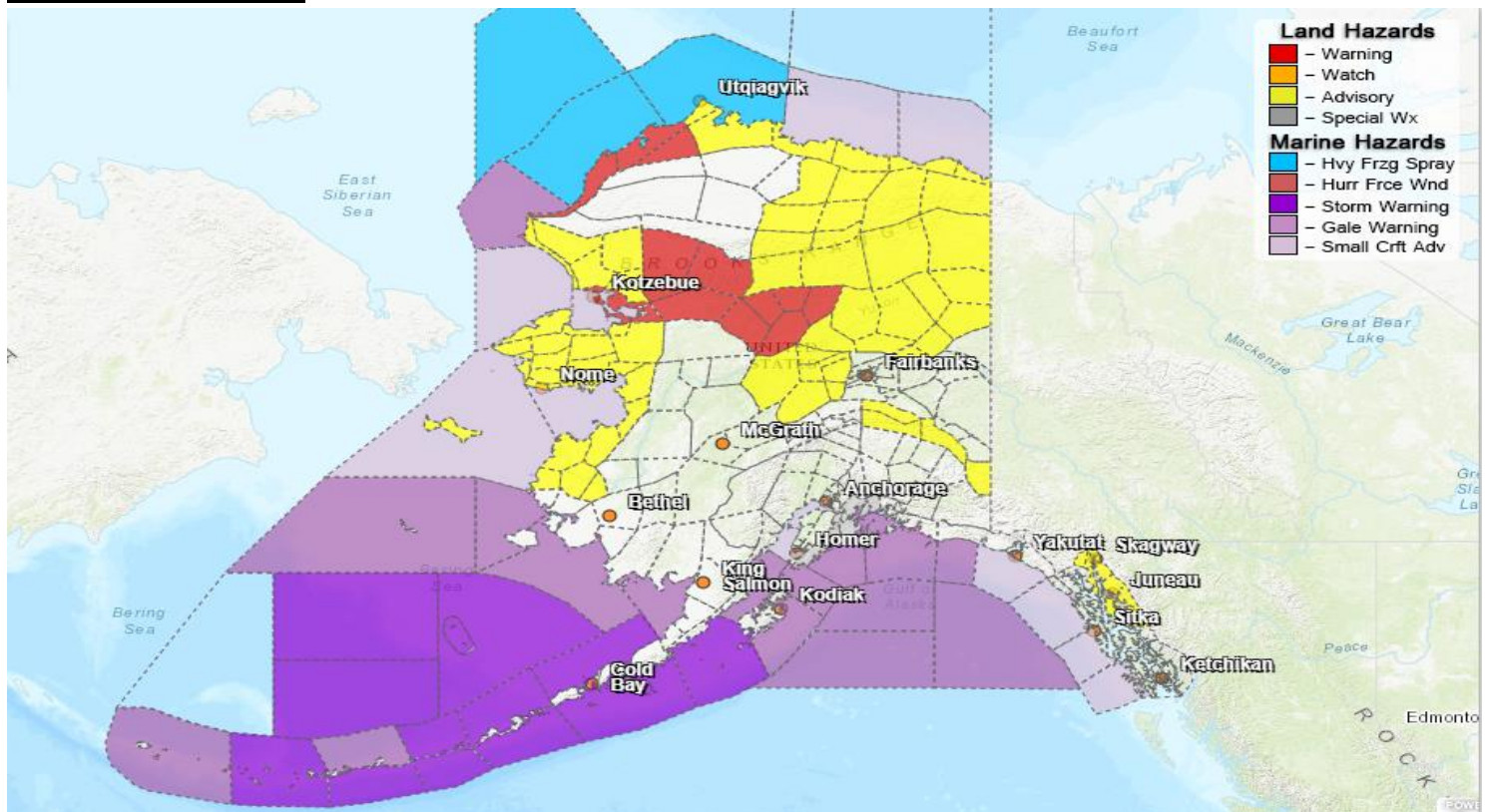
For Alaska Volcano updates, go to: <https://www.avo.alaska.edu/>

### **Air Quality Index (AQI) Advisories**

For the most up to date Air Quality Index Advisories:

<http://dec.alaska.gov/Applications/Air/airtoolsweb/Home/Index>

## Significant Weather:



A Winter Storm Warning is in effect until 3:00 P.M. for the Baldwin Peninsula, Selawik Valley, and Upper Kobuk & Noatak Valleys. Until 6:00 P.M. for the Upper Koyukuk Valley & Tanana Valley, and the Western Arctic Coast. Heavy snow accumulations of 2 to 4 inches with localized amounts of 7 to 10 inches are expected in the area.

A Winter Weather Advisory is in effect until 3:00 P.M. today for the Chukchi Sea Coast, Lower Kobuk, and Noatak Valleys. Until 6:00 P.M. for Southeastern Brooks Range, Yukon Flats, and the Central Interior. And until midnight tonight for the Northern Arctic Coast and Beaufort Sea Coasts. Blowing snow expected with accumulations of 3 to 5 inches throughout the area

A Winter Weather Advisory is in effect from 6:00 P.M. Wednesday until 6:00 A.M. Thursday for Haines Borough, Lynn Canal, Juneau Borough, Northern Admiralty Island, and the Klondike Highway. Snow accumulations of 4 to 6 inches are expected.

A Special Weather Statement has been issued for Western Prince William Sound. Rapid and Significant water level rises in the Bear Glacier Lagoon are expected this week due to water releasing from a lake restricted by Bear Glacier.

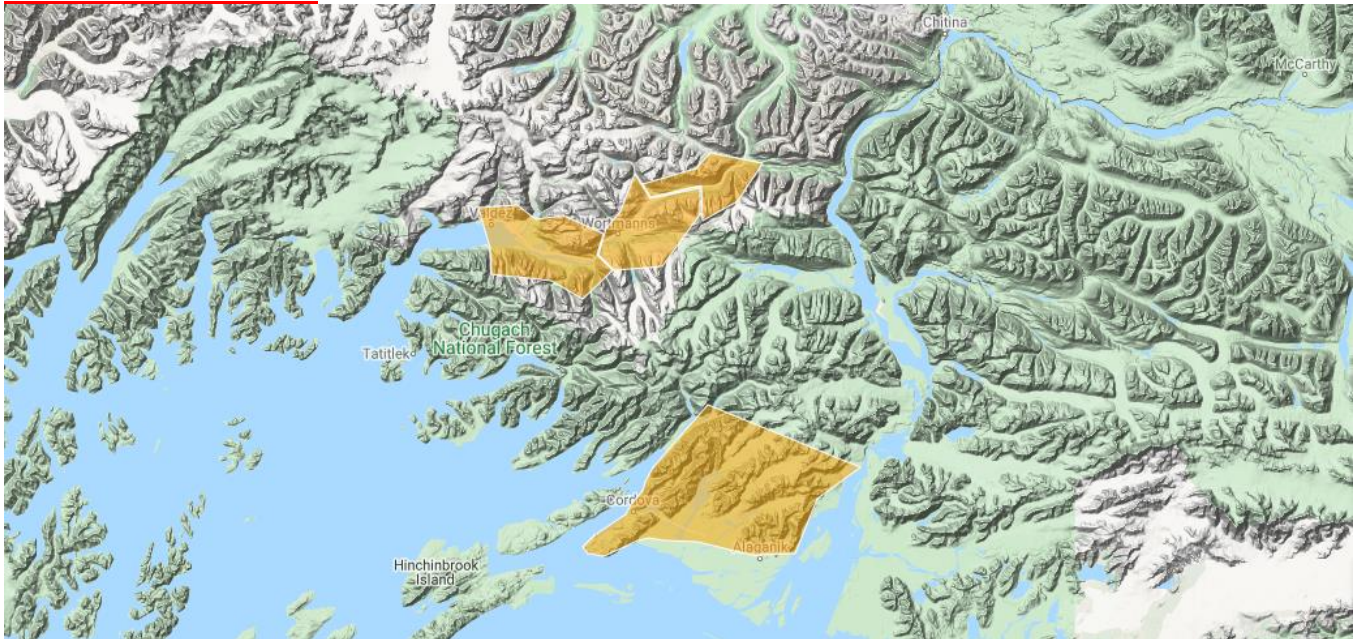
A High Surf Advisory is in effect until 3:00 P.M. today for the Yukon Delta. 6:00 P.M. for the Southern Seward Peninsula Coast, Eastern Norton Sound and Nulato Hills, St Lawrence Island, and Bering Strait Coast. 9:00 P.M. for Chukchi Sea Coast, Baldwin Peninsula, and Selawik Valley. Waves and surf 2 to 5 feet above the normal high tide line are expected.

For more information and the most current weather, Watches / Warnings / Advisories go to:  
<http://www.weather.gov/arh/>

For Fire weather: <https://fsapps.nwcg.gov/psp/npsg/forecast/#/outlooks?state=map&gacId=1>



## **Avalanche Forecast:**



Valdez and Cordova have some areas that are currently showing Considerable potential for avalanche activity. Please attempt to check the Avalanche Forecast Center closest to your area for the most up to date information on Avalanche potential. <https://alaskasnow.org/> or <https://www.weather.gov/afc/avalanche>

## **Spills of Oil and Hazardous Substances**

The ADEC Spill Prevention and Response page is located at:

<http://dec.alaska.gov/spar/ppr/spill-information/response/>

## **Alaska Cyber Security Information**

State Employees may sign up for cybersecurity notifications and alerts at

<https://oit.alaska.gov/Security>

**The Next Situation Report:** will be 12 November 2020. A significant change in the situation or the threat level will prompt an interim report.

This report is posted on the internet at <https://ready.alaska.gov/sitrep>. To register for email distribution, go to <http://list.state.ak.us/mailman/listinfo/dhsem.situation.report>. Direct questions regarding this report to the SEOC at 907-428-7100 or [seoc@alaska.gov](mailto:seoc@alaska.gov).